

Roadway and Sidewalk Improvement Virtual Abutter Meeting



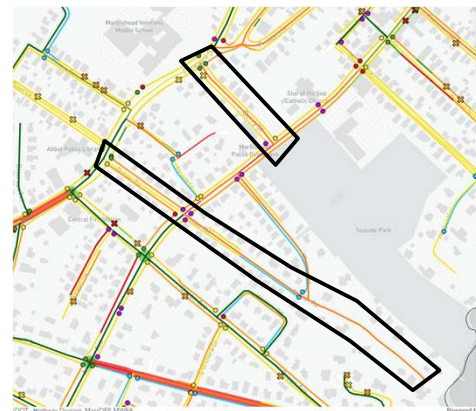
Town of Marblehead
Department of Public Works
April 2, 2026



1

Project Background

- Roadway Assessment & Inventory
- Annual Town Meeting Article 11, 2022
- Sidewalk Assessment & Inventory
- Utility Upgrades
- Roadway and Sidewalk Improvements



2

Project Area Bubier Road & Gerry Street



3

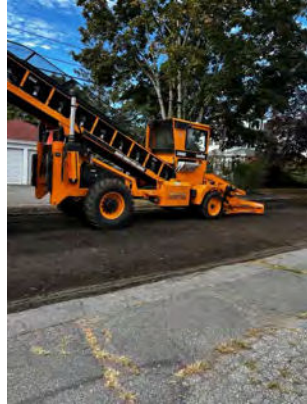
Planned Work



- Roadway Repaving**
Bubier Rd – Full Depth Reclamation & Paving
Gerry St – Mill & Overlay
- Sidewalk Improvements
- New ADA Compliant Curb Ramps

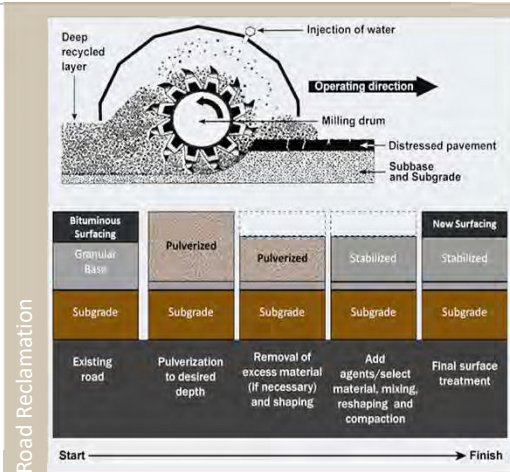
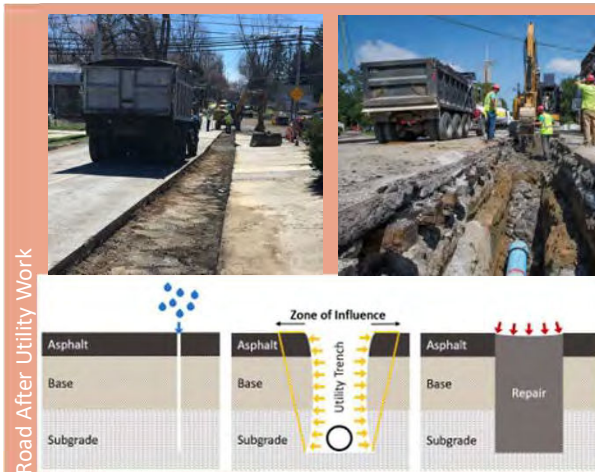
4

Roadway Full Depth Reclamation & Paving



5

Why Reclamation?



6

Planned Work



Roadway Repaving

- Bubier – Full Depth Reclamation & Paving
- Gerry – Mill & Overlay

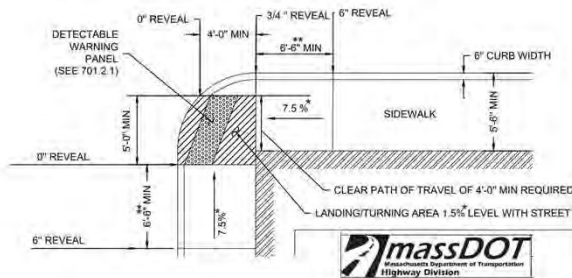
Sidewalk Improvements

New ADA Compliant Curb Ramps

7

Sidewalk Improvements & ADA Ramps

- 5' asphalt sidewalk where possible with granite curb
- ADA compliant curb ramps at roadway crossings
- Maintain trees in coordination with Tree Warden



8

What is this going to look like?



- Initial Structure Adjustment
- Roadway Reclamation
- Roadway Reshape and Regrade
- Roadway Binder
- Final Structure Adjustment
- Sidewalk Crew Demo
- Set Curb + Grade Sidewalks
- Curb Ramps
- Final Roadway Paving
- Final Sidewalks Paving



9

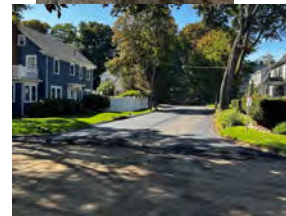
What is this going to look like?



10

Initial Mobilization & Road Reconstruction

- Initial Structure Adjustment
- Roadway Reclamation
- Roadway Reshape and Regrade
- Roadway Binder
- Final Structure Adjustment



11

Sidewalk Work

- Sidewalk Crew Demo
- Set Curb + Grade Sidewalks
- Curb Ramps
- Binder Sidewalk



12

Gerry Street – Mill & Overlay

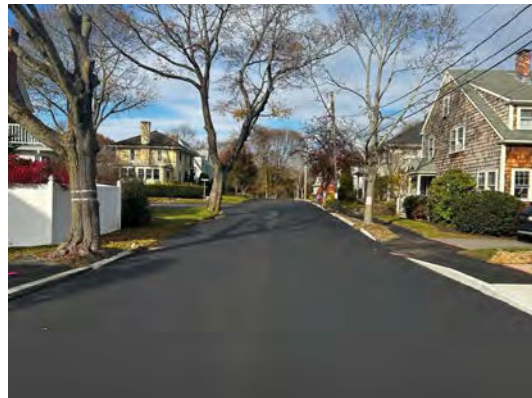
- Roadway Milling
- Final Paving Roadway
- Final Paving Sidewalks
- Final Line Paint



13

Bubier Road - Final Paving

- Final Paving Roadway
- Final Paving Sidewalks
- Final Line Paint



14

Tentative Schedule

	April				May				June	
Initial Structure Adjustment	█									
Roadway Reclamation	█	█	█	█						
Final Structure Adjustment		█	█	█	█	█	█	█	█	
Sidewalk Construction Crew			█	█	█	█	█	█	█	█
Concrete Curb Ramps				█	█	█	█	█	█	█
Final Roadway Paving								█	█	█
Final Sidewalks Paving									█	█



Note: Schedule is weather dependent and subject to change.

Traffic Management and Access

- Temporary road closures and detours
 - May be one way or restricted access at time
- Follow direction of detail officers for access
- No Parking during construction 7 am-5 pm
- Recommend parking elsewhere to facilitate work
 - Typically, driveway access may be delayed up to 15 min
 - When paving, road and driveway access will be delayed up to 2 hours





Additional Information

- No parking: Mon-Fri, 7 am-5 pm
- This work is weather dependent
- Avoid raised structures
- **Expect Delays: There will be times you cannot access your driveway**
 - Park elsewhere during operations where possible
 - Police details will be on site to assist with access, when possible
- Increased noise and dust from heavy equipment
- Updates will be posted at: www.MarbleheadMA.gov

17

Thank you in
advance for your
cooperation!

Any Questions?

Contact:

Department of Public Works

highway@marbleheadma.gov

781-631-1750



18