

# Roadway and Sidewalk Improvement Virtual Abutter Meeting



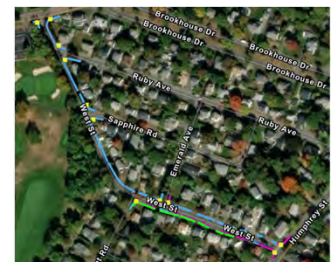
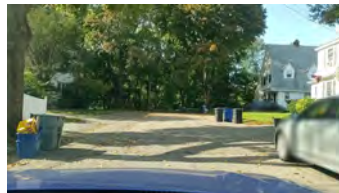
Town of Marblehead  
Department of Public Works  
September 10, 2025



1

## Project Background

- Roadway Assessment & Inventory
- Annual Town Meeting Article 11, 2022
- Sidewalk Assessment & Inventory
- Utility upgrades
- Roadway Reconstruction and Sidewalk Improvements
  - Contractor: D&R Paving



2

## Project Area West St, Mystic Rd, Florence Rd



3

## Planned Work



Roadway Full Depth  
Reclamation & Paving

Sidewalk Improvements

New ADA Compliant Curb  
Ramps

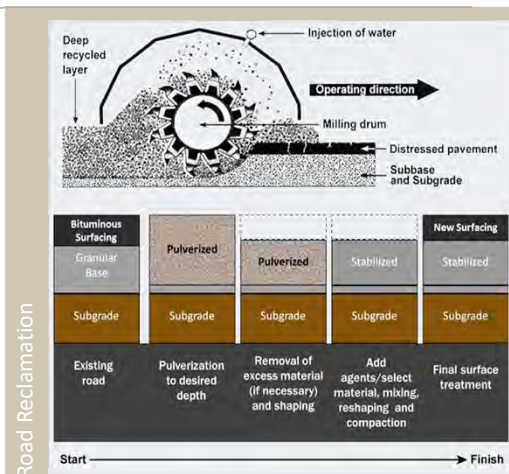
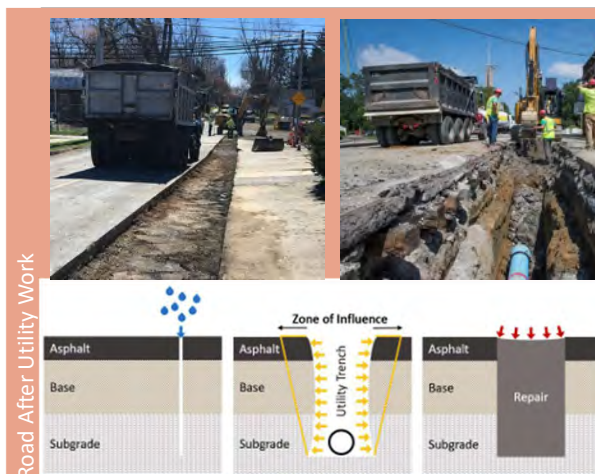
4

# Roadway Full Depth Reclamation & Paving



5

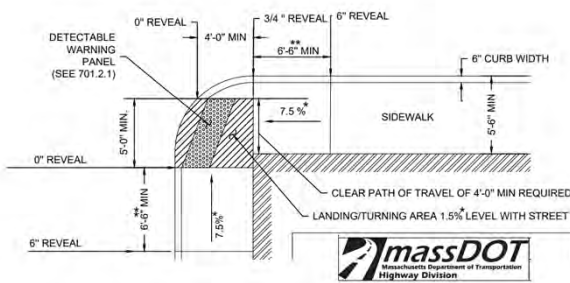
## Why Reclamation?



6

## Sidewalk Improvements & ADA Ramps

- 5' asphalt sidewalk where possible with granite curb
- ADA compliant curb ramps at roadway crossings
- Maintain trees in coordination with Tree Warden



7

## What is this going to look like?



- Initial Structure Adjustment
- Roadway Reclamation
- Roadway Reshape and Regrade
- Roadway Binder
- Final Structure Adjustment
- Sidewalk Crew Demo
- Set Curb + Grade Sidewalks
- Curb Ramps
- Final Roadway Paving
- Final Sidewalks Paving



8



## Initial Mobilization & Road Reconstruction

- Initial Structure Adjustment
- Roadway Reclamation
- Roadway Reshape and Regrade
- Roadway Binder
- Final Structure Adjustment



9

## Sidewalk Work

- Sidewalk Crew Demo
- Set Curb + Grade Sidewalks
- Curb Ramps
- Binder Sidewalk



10

## Final Paving

- Final Paving Roadway
- Final Paving Sidewalks
- Final Line Paint



11

## Tentative Schedule

	September				October				November	
Initial Structure Adjustment										
Roadway Reclamation										
Final Structure Adjustment										
Sidewalk Construction Crew										
Concrete Curb Ramps										
Final Roadway Paving										
Final Sidewalks Paving										



**Note:** Schedule is weather dependent and subject to change.

12

## Traffic Management and Access

- Temporary road closures and detours
  - May be one way or restricted access at time
- Follow direction of detail officers for access
- No Parking during construction 7 am-5 pm
- Recommend parking elsewhere to facilitate work
  - Typically, driveway access may be delayed up to 15 min
  - When paving, road and driveway access will be delayed up to 2 hours



13

## Additional Information



- No parking: Mon-Fri, 7 am-5 pm
- This work is weather dependent
- Avoid raised structures
- **Expect Delays: There will be times you cannot access your driveway**
  - Park elsewhere during operations where possible
  - Police details will be on site to assist with access, when possible
- Increased noise and dust from heavy equipment
- Updates will be posted at: [www.MarbleheadMA.gov](http://www.MarbleheadMA.gov)

14

Thank you in  
advance for your  
cooperation!

Any Questions?

Contact:

Department of Public Works

[highway@marbleheadma.gov](mailto:highway@marbleheadma.gov)

781-631-1750

