

The Marblehead Housing Authority

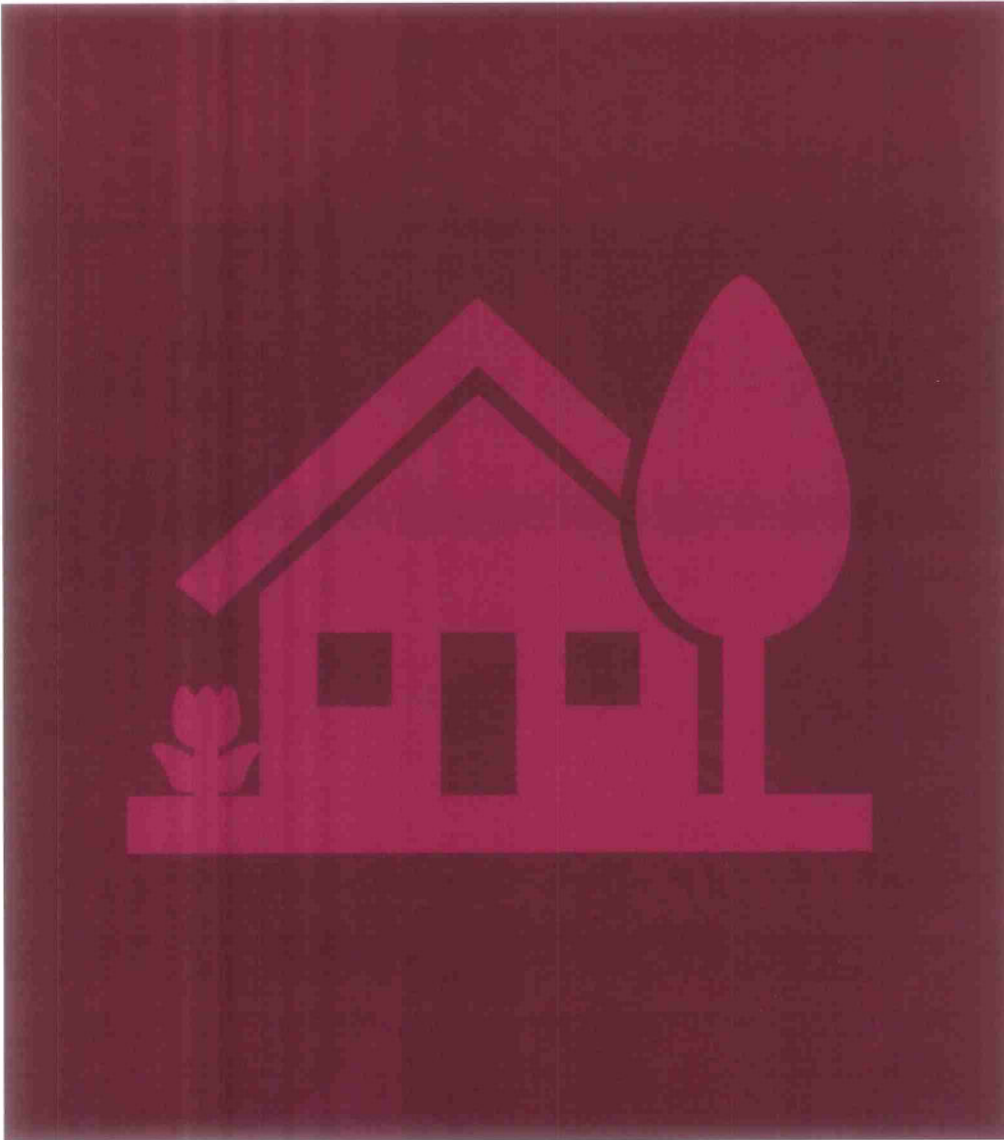
A Brief Overview of the
Agency and the Industry



This Photo by Unknown Author
is licensed under CC BY-NC-ND

Common Questions About Housing Authorities In Massachusetts

- Does every Town and City have a Housing Authority?
- Answer-Not all, but many Cities and Towns in the Commonwealth have Housing Authorities.
- Are Housing Authorities considered part of the Town/City Government?
- Answer-Housing Authorities are entirely separate from their perspective Towns and Cities, they are separate entities referred to as Quasi-Government Agencies. However, many agencies often partner with their local jurisdictions in many ways to provide programs and pool resources when possible. (Examples to Come)

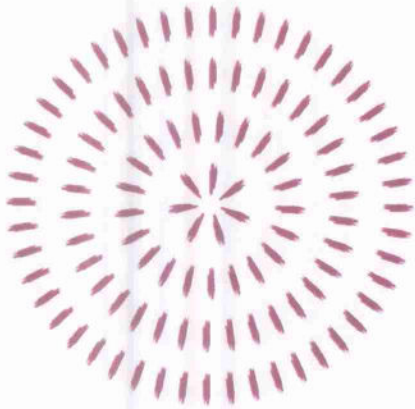


Marblehead Housing Authority Oversight

- The Housing Authority is governed by strictly enforced state regulations.
- The Department of Housing and Community Development (DHCD) is the state agency that oversees enforcement of all Housing Authorities across the state.
- Marblehead and all housing agencies in Massachusetts are overseen by their own five-member Board of Commissioners. It is required that one Commissioner be a resident. (We currently have one vacancy).

More Common Questions About Housing Authorities In Massachusetts

- Where does the Housing Authority get it's funding?
- Answer-Most Authorities have state funding and federal funding, depending on the types of programs they have. Marblehead HA only has state housing and only receives state funding to operate. State funding is based on size of the agency and a formula. It is never enough to cover all the costs, so we must balance out the needs and plan accordingly.
- Most Housing Agencies apply for grants and other sources of funding statewide and locally to supplement the costs of operation, modernizing inventory and for resident programming.



How Many Developments and Units Does MHA Have?

8 Developments 307 Units

How Does the Rent Work?

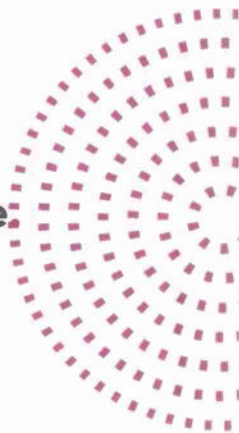
. Rent is calculated based on Income and is on average 30% of the individual or family income

How Do People Qualify for Public Housing?

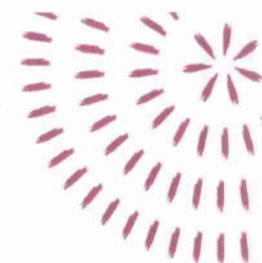
They must meet income guidelines as published by the State.

How Do People Apply and How Long is the Waitlist?

In Massachusetts, applicants apply through a centralized waitlist. The wait varies and is dependent on vacancies and priority or preference qualifications



Marblehead Housing Authority



Elderly Units

223

Total

Powder
House Court-
38 units

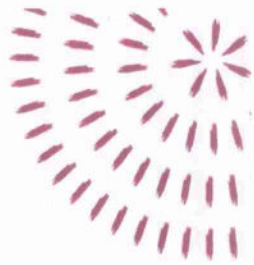
Green Street
Court-32
units

Old Farrell
Court-64
units

New Farrell
Court-48
units

Roads
School-40
units





Marblehead Housing Authority



Family Units

84 Total

Barnard Hawkes
Court-22 units

Old Broughton
Road-54 Units

New Broughton
Road-8 units

Total Overall Unit Count

307

Only State Units

No Federal
Programs

Marblehead Staffing Structure

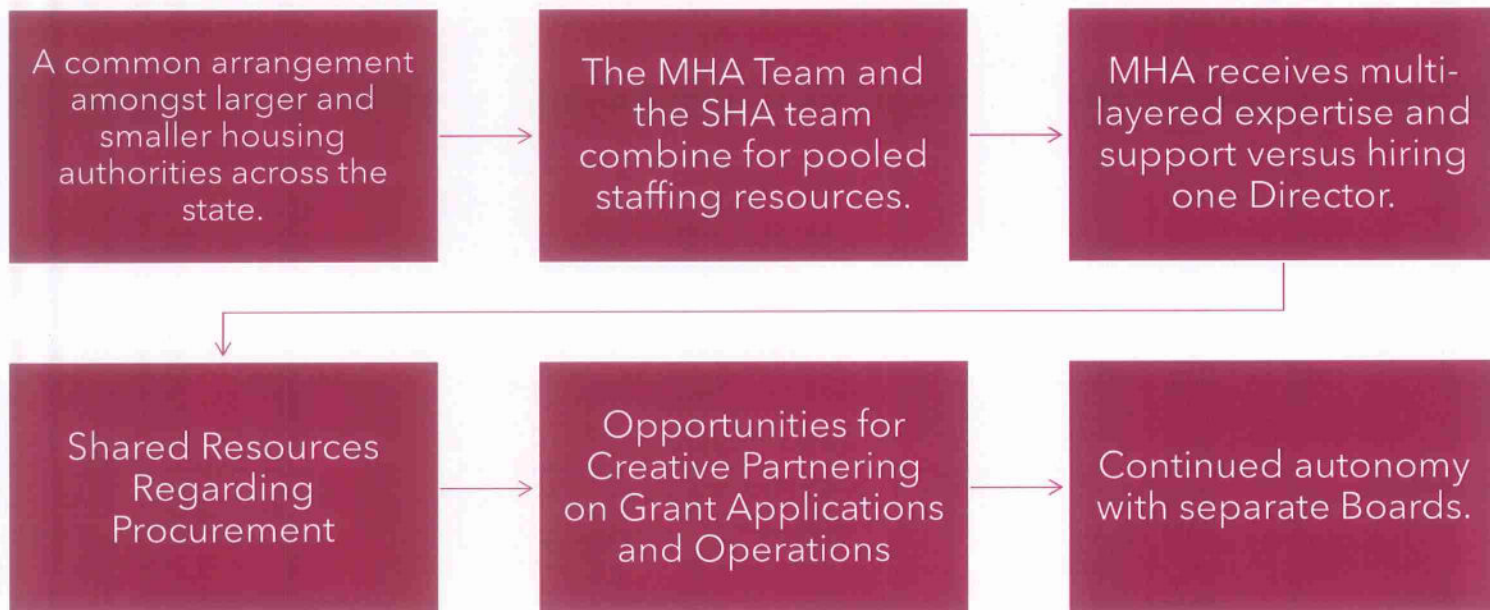
- Administrative Staff

- FT Office Manager
- PT Accounting Coordinator
- FT Housing Manager
- PT Housing Manager
- PT Resident Services Coordinator

- Maintenance Staff

- FT Foreman/Licensed Plumber
- FT Maintenance Mechanic
- FT Maintenance Mechanic
- FT Groundskeeper/Custodian
- FT Groundskeeper/Custodian

Marblehead HA Entered into a Management Services Agreement with Salem HA



Community Partnerships, Programming and Possible Future Partnerships

- Housing Authorities regularly partner with local agencies, Cities/Towns and organized groups and programs to provide more resources and housing to the communities we serve.
- A few recent examples:
 - Marblehead HA partnered recently with Sustainable Marblehead to explore grant opportunities and provide educational programs to get residents involved in the importance of sustaining our environment.
 - Marblehead HA partnered with Salem State University School of Nursing to provide health education programs for senior developments.
 - Marblehead HA partnered with the Driftwood Garden Club to organize a civic engagement project involving plantings at a senior development.
- Future partnerships could involve joining forces with existing groups to explore development of further affordable housing opportunities. These types of partnerships are growing more common in an effort to increase opportunities in communities across the state.



Questions?

This Photo by Unknown Author is licensed under CC BY