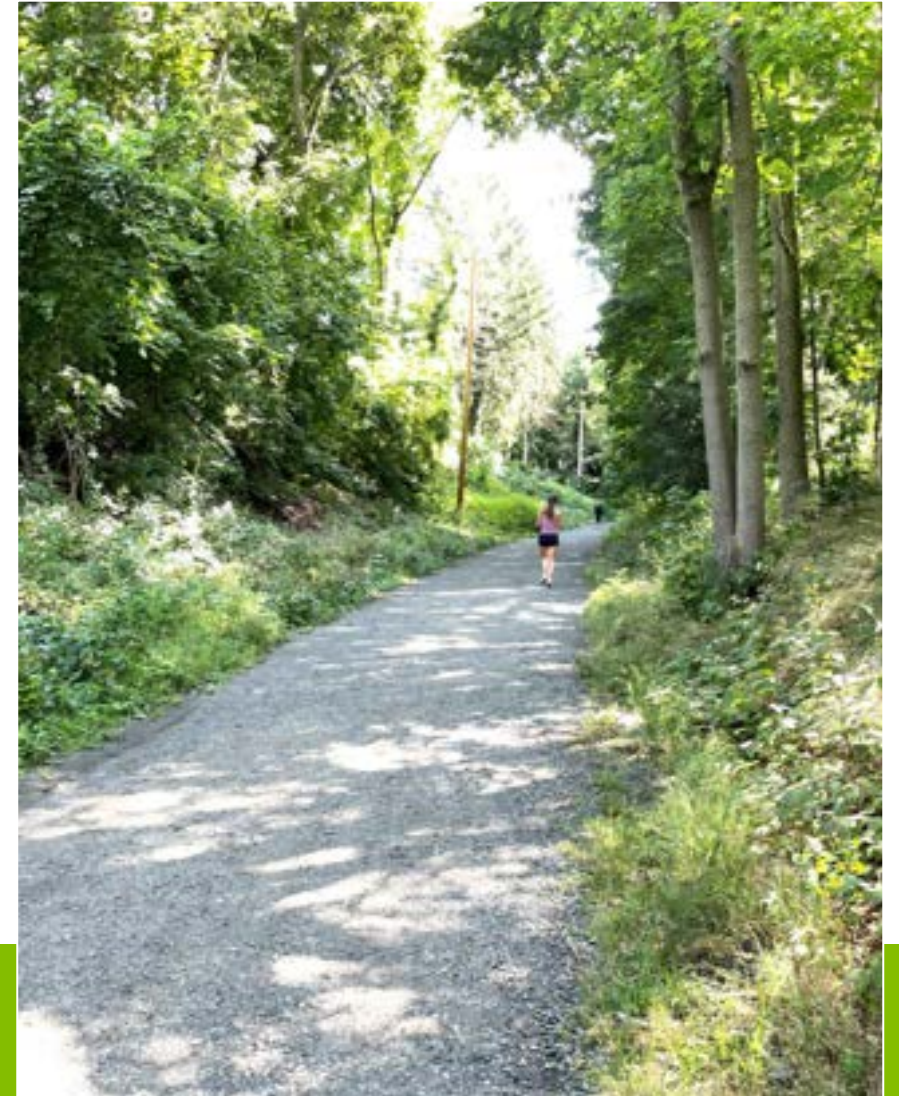


Marblehead Rail Trail

Salem and Swampscott Branches

December 9, 2024



Existing Conditions Swampscott Branch

Agenda

- Introduction
- Scope and Schedule
- 2020 Trail Plan
- Existing Conditions
- Listening Session
- Next Steps



Existing Conditions Salem Branch

Introduction

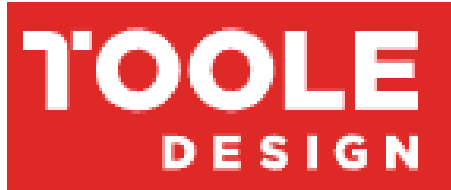


Existing Trailhead at Ware Pond Conservation Area

A Well-Loved Trail

- 4.5 miles long
- 30'-60' ROW
- 4' to 10' wide with varying surfaces
- 9 street crossings
- Utilities corridor
- Conservation areas and community connections
- **Rustic Character**

Introduction



Kathleen Ogden Fasser - PM

Senior Principal Landscape Architect

Chris Kelleher - Project Engineer

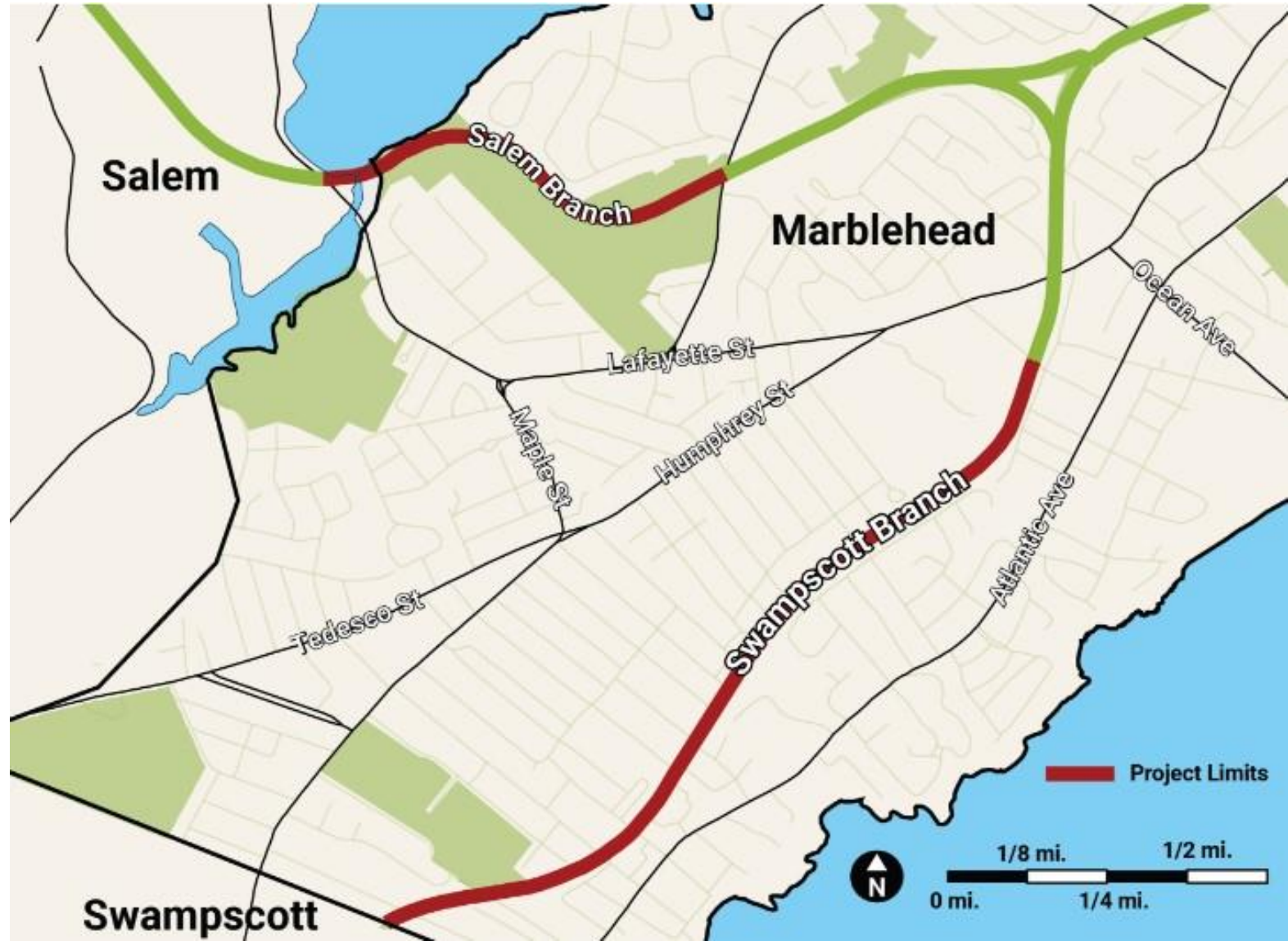
Eileen Brucato – Landscape Designer



Scope of Work

Project Areas

- Lead Mills Branch
- Swampscott Branch



Scope of Work

- Existing Conditions Assessment
 - *site visits*
 - *field survey*
 - *environmental resources area mapping*
- Public Engagement
 - *initial outreach*
 - *5 public presentations with listening sessions*
 - *meetings with utilities and stakeholders/abutters*
- Environmental Permitting
- Preliminary Design through Construction Documents
- Early construction project
- Coordination with other planning efforts: *Trail Plan, Complete Streets Policy, Bicycle Plan, regional trail plans*



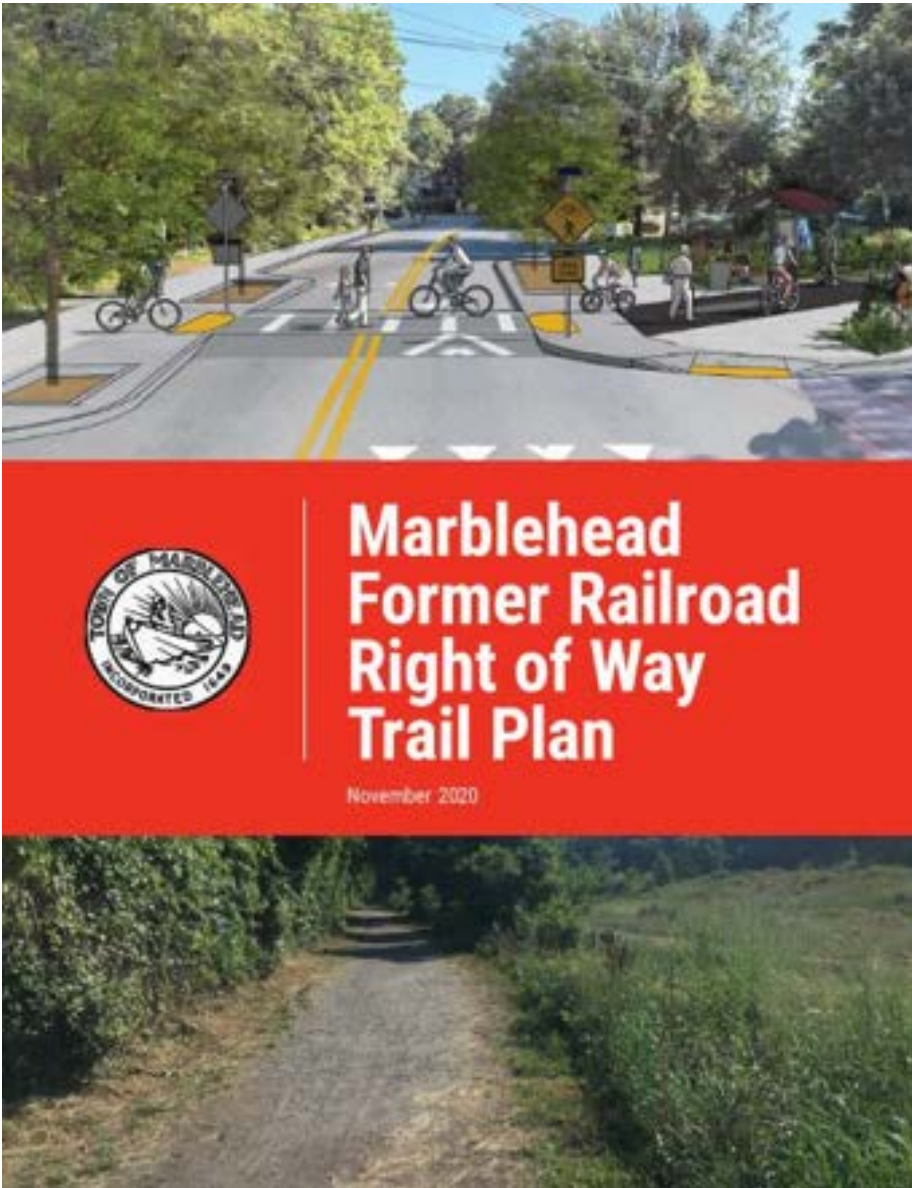
Recently Improved Crossing at Smith Street

Schedule: thru end of 2025

- Public Engagement *throughout*
- Existing Conditions Assessment (*complete*) *thru mid-Oct 2024*
- Early Construction Project (*design and bidding complete*) *thru early Nov. (construction thru June 2025)*
- Preliminary Design *thru end of March 2025*
- Construction Documents *thru end of Dec. 2025*
- Environmental Permitting *thru end of Dec. 2025*

2020 Trail Plan

- Public Engagement
- Develop a vision and objectives
- Typical cross-sections
- Conceptual level design of street crossings



Trail Plan Vision



Figure 13 Decomposed granite trail at Ellen Swallow Richards Park in Lawrence, MA (Source: STIMSON, photo by Ngoc Doan)

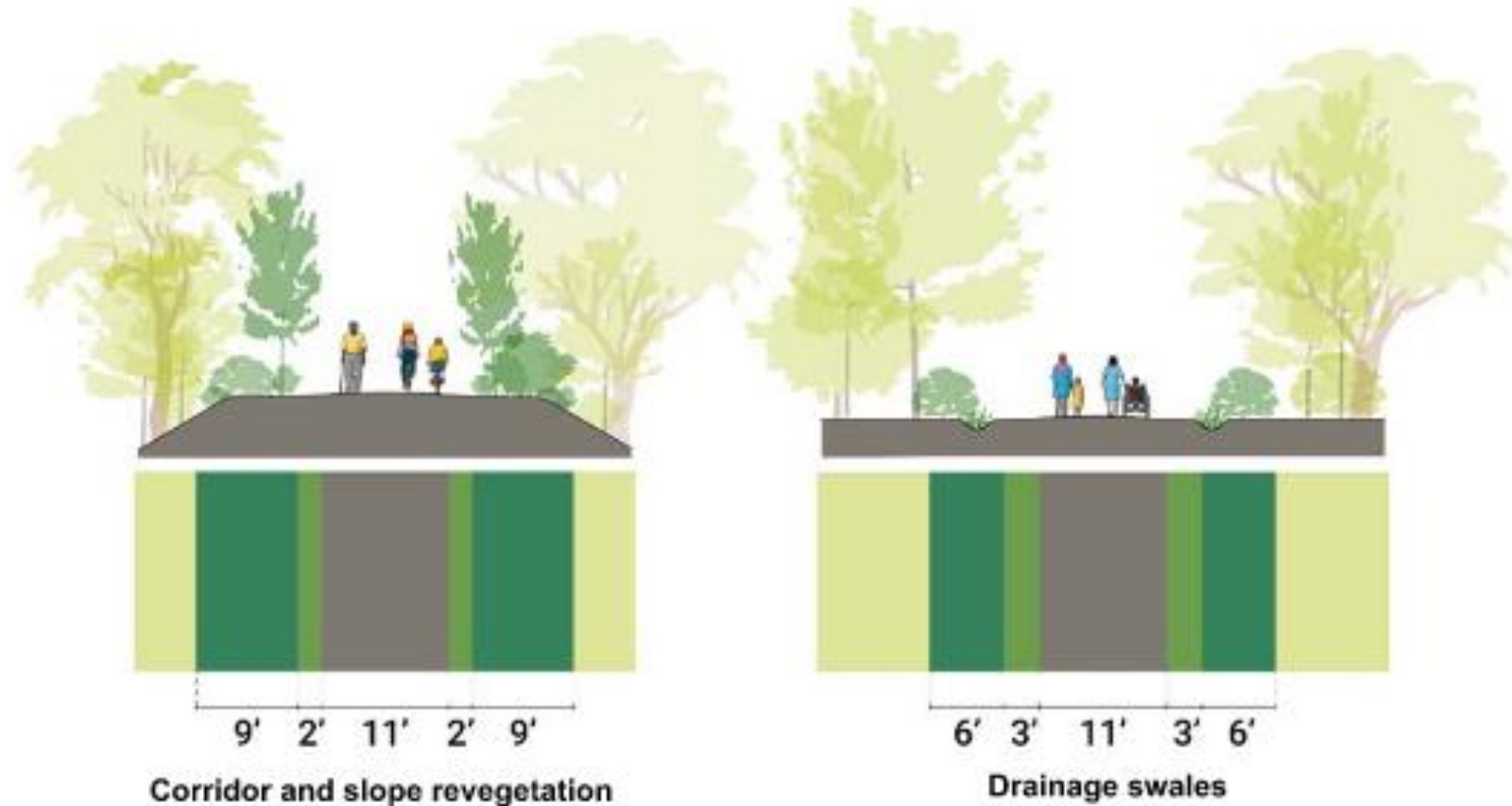
A safe, accessible, and connected trail.

Objectives:

- ADA compliant
- Wider trail per AASHTO recommendations
- Safety countermeasures at street crossings (consistent with state and federal guidelines and best practices)
- Natural feel
- Wayfinding signage
- Allow for utilities and their maintenance
- Improve informal access points
- Ecological landscape design practices
- Amenity nodes for trail users

Trail Plan Conceptual Design

Typical Cross-section:
11' width, 2'-3' shoulders,
stabilized aggregate
surface, drainage: green
and underground



Typical Sections from 2020 Trail Plan

Trail Plan Conceptual Design

Street crossings: safety countermeasures, amenity nodes, wayfinding signage



West Shore Drive Concept Plan from 2020 Trail Plan

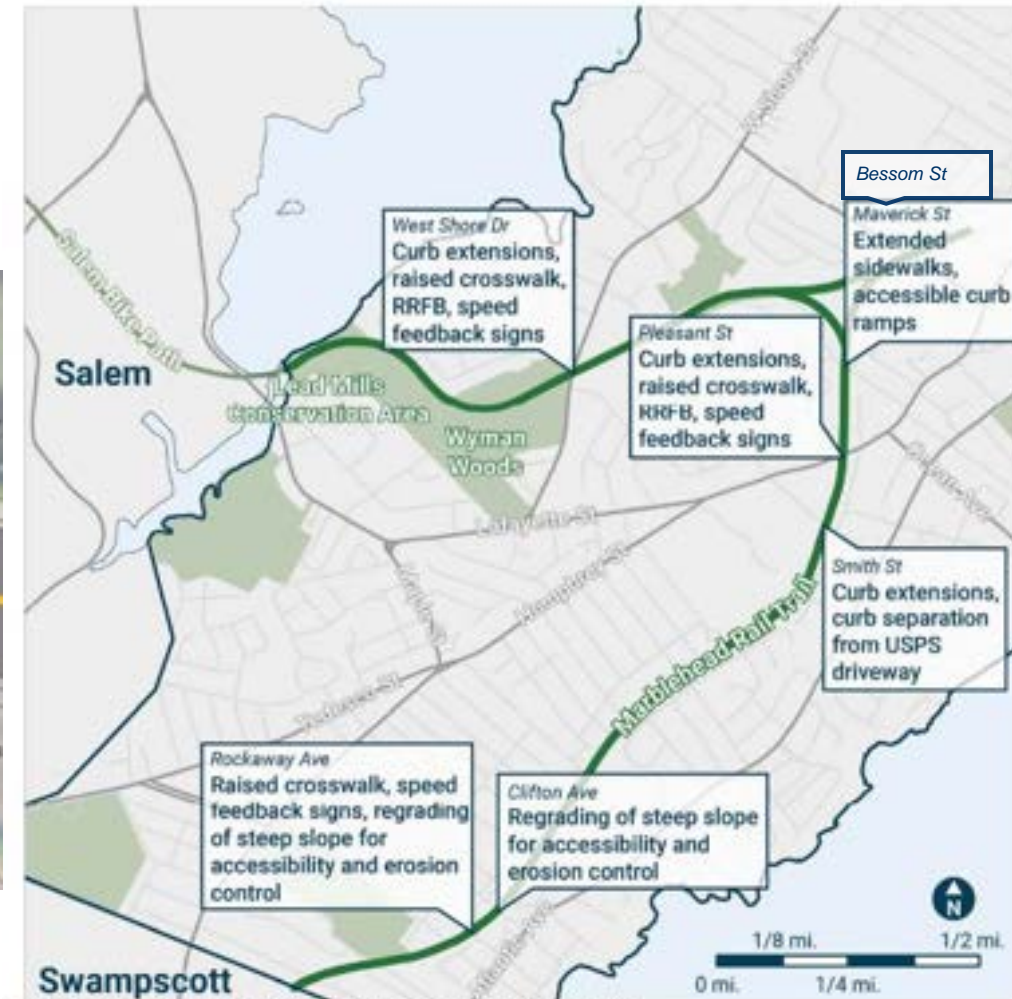


Figure 34 Summary of key recommendations for safety countermeasures

Safety Countermeasures from 2020 Trail Plan

Existing Conditions

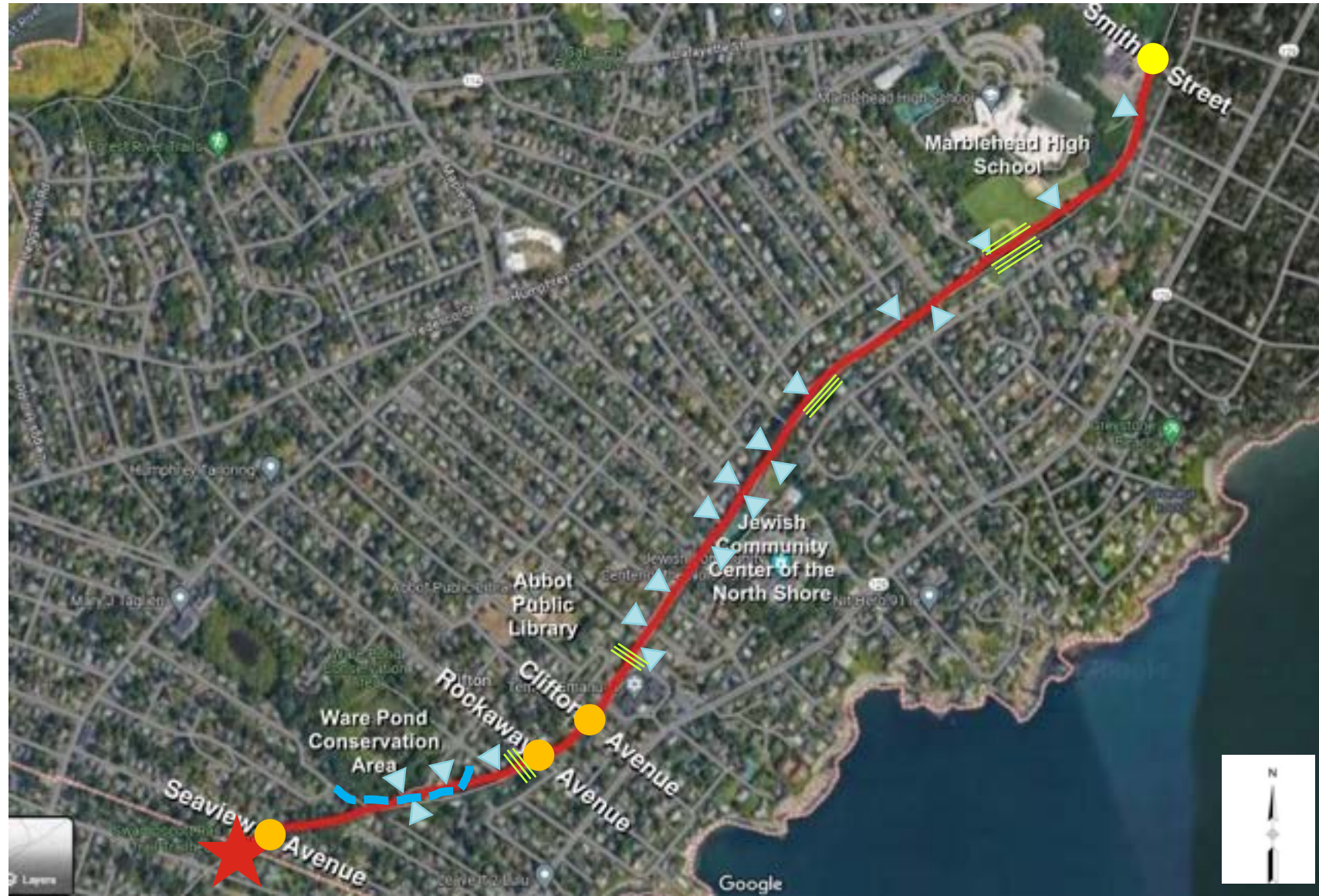
Swampscott Branch:

- User Management
- Terrain taming
- Landscape preservation and restoration

LEGEND

- ★ Trailhead at Swampscott
- Road crossing
- Recently improved crossing
- ▲ Steep terrain
- ▬ Wetlands buffer zone

TOOLE
DESIGN





Existing Conditions

Salem Branch:

- Resource protection
- Structures restoration
- Intervention simplicity

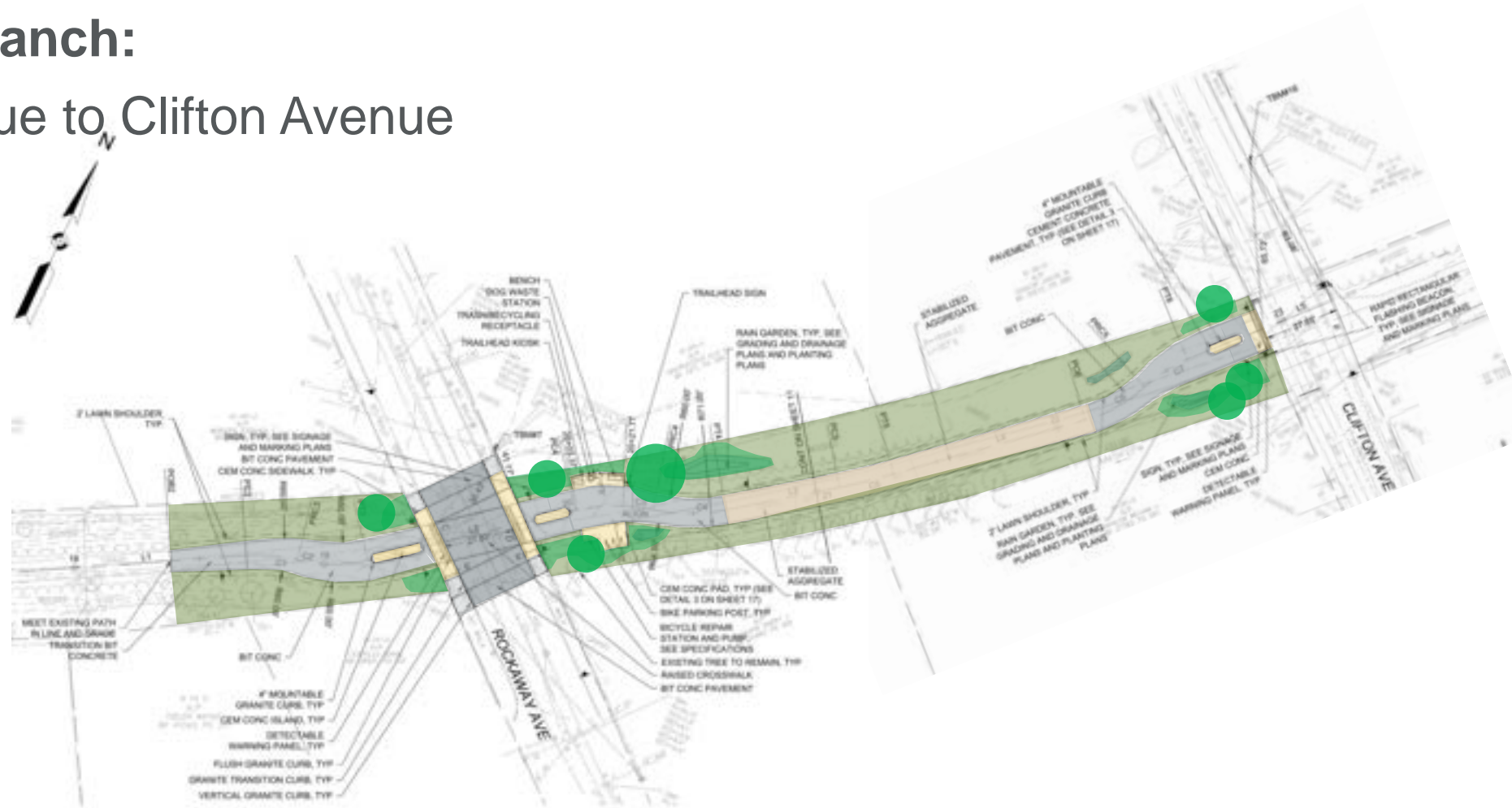
LEGEND

- ★ Trailhead at Salem
 - Recently improved crossing
 - ↪ Footbridge
 -  Culvert
 -  Resource areas
- TOOLE**
DESIGN



Early Construction Project

Swampscott Branch:
Rockaway Avenue to Clifton Avenue



Listening Session



Listening Session

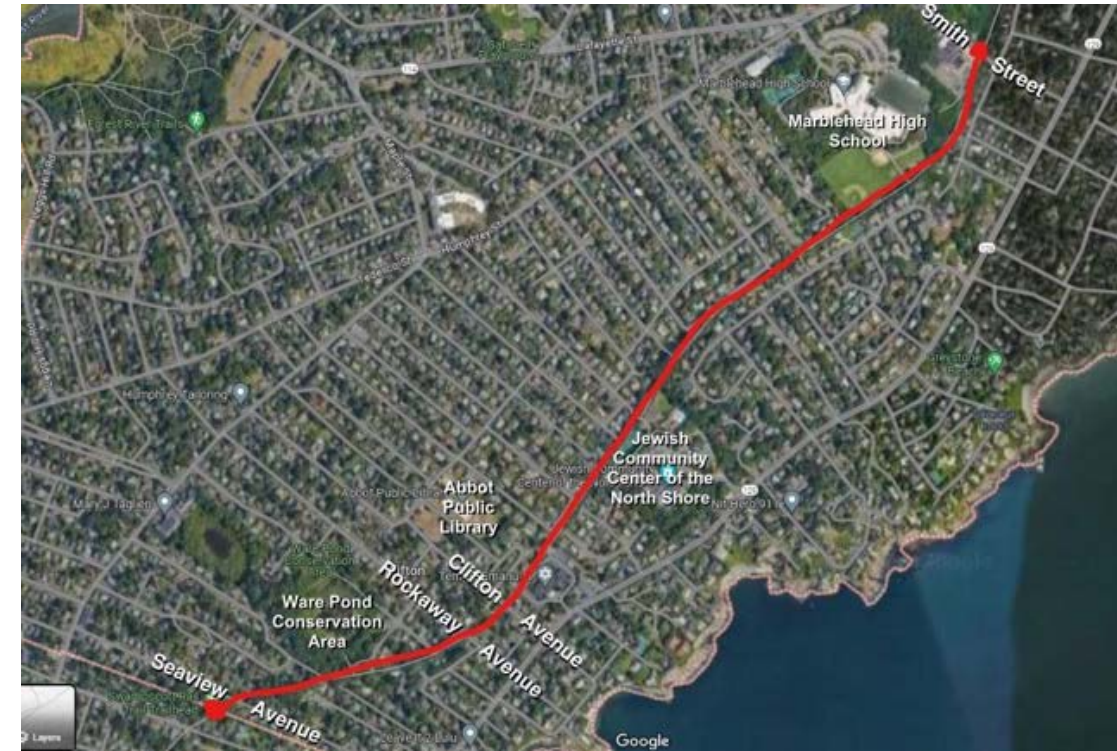


- We will take comments in the order hands are raised
 - If calling in, Dial *9 to raise your hand and *6 to unmute
- Additional comments can be made using the Q+A function and/or the chat function
- Please try to limit your time to 1 minute
- The meeting is scheduled to end at 8:30pm

Listening Session



- Input regarding existing conditions
- Questions regarding proposed approach
- Concerns regarding implementation



Next Steps

- Preliminary Design
- Presentation and public input meetings at Draft and Final preliminary design

*Visit the website
for updates*



Recently Improved Crossing at West Shore Drive

<https://www.marblehead.org/town-planners-office/pages/rail-trail-improvement-projects-updates>



Thank you
